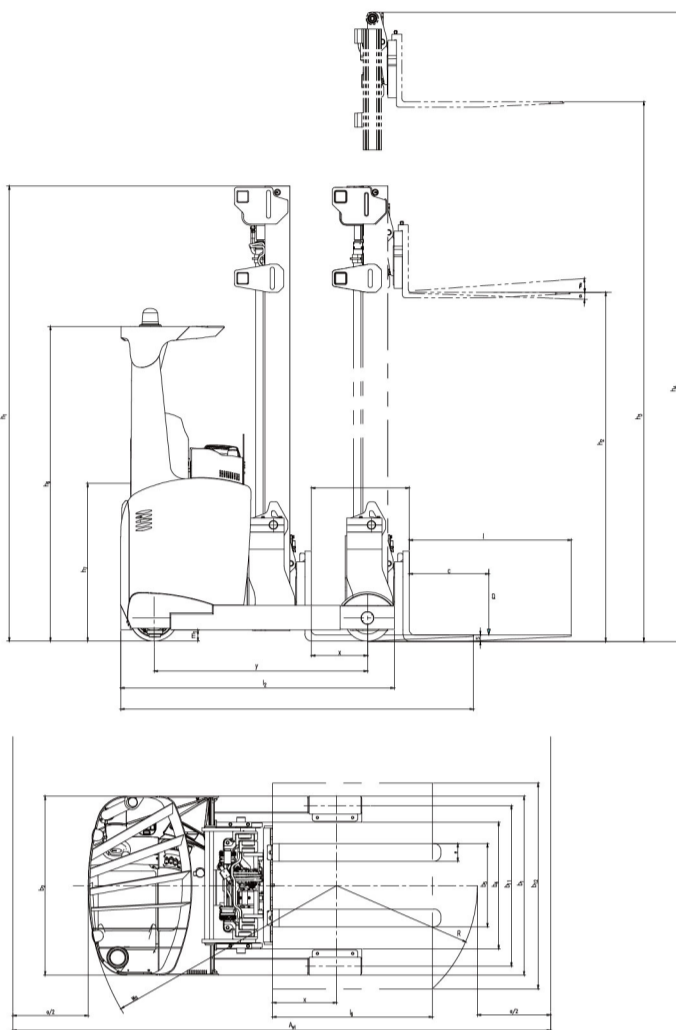


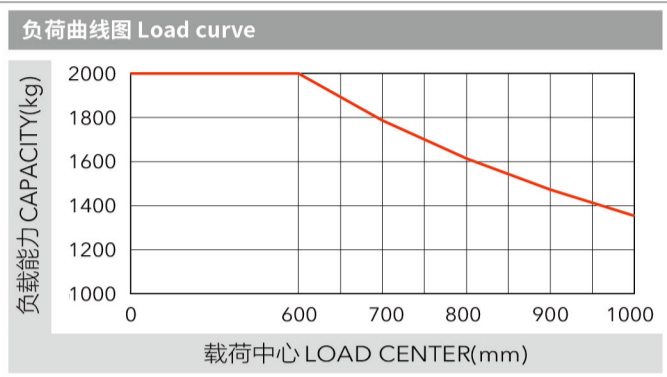
宽视野三节全自由门架 WIDE VIEW FULL FREE 3-STAGE MAST

门架型号 Mast model	最大起升高度 (mm) Max. lifting height (mm)	承载能力 (载荷中心600mm)(kg) Load capacity (load center 600mm)(kg)		门架全高 (货叉落地, 门架垂直) (mm) Height (mast lowered)(mm)	自由起升高度 (带指货架) (mm) Free lift (with backrest) (mm)	整车自重 (kg) Service weight (kg)	货叉倾角 α/β (°) Fork tilt angle α/β (°)
		CQD20-GB2SHD	CQD20-GB2SHD				
ZSM460	4600	2000	2334	2334	1311	4455	2°/4°
ZSM480	4800	2000	2401	2401	1378	4475	2°/4°
ZSM540	5400	2000	2601	2601	1578	4530	2°/4°
ZSM570	5700	2000	2701	2701	1378	4580	2°/4°
ZSM630	6300	2000	2901	2901	1878	4640	2°/4°
ZSM675	6750	2000	3051	3051	2028	4675	2°/4°
ZSM700	7000	2000	3134	3134	2111	4690	2°/4°
ZSM715	7150	2000	3184	3184	2161	4710	2°/4°
ZSM750	7500	2000	3301	3301	2278	4745	2°/4°
ZSM800	8000	2000	3467	3467	2444	4795	2°/4°
ZSM850	8500	2000	3634	3634	2611	4845	2°/4°
ZSM900	9000	1900	3801	3801	2778	4895	2°/4°
ZSM950	9500	1800	3967	3967	2944	4945	2°/4°
ZSM1000	10000	1700	4134	4134	3111	4995	2°/4°
ZSM1050	10500	1550	4301	4301	3278	5045	2°/4°
ZSM1080	10800	1450	4401	4401	3378	5075	2°/4°
ZSM1100	11000	1350	4467	4467	3444	5100	2°/4°
ZSM1150	11500	1250	4634	4634	3611	5150	2°/4°
ZSM1200	12000	1100	4801	4801	3778	5200	2°/4°
ZSM1250	12500	900	4967	4967	3944	5250	2°/4°



Ast:直角堆垛宽度
Right angle stacking aisle width
a:间隙 Clearance a=200mm

2.0 t



注:竖轴表示承载量,横轴表示载荷中心。载荷中心是从货叉正面计算起,标准载荷的基点是指负荷边长为1000毫米的立方体中心位置。当门架前倾、使用非标准货叉或装载超过正常宽度的负荷时,将会使承载量减少。通过负荷曲线图,能及时地了解标准门架在各种载荷中心时的承载能力。

Note: The vertical axis stands for load capacity and the horizontal axis stands for load center which is calculated from the front surface of the forks to the gravity of the standard load. The standard load means a cubic with 1000mm edge length. When mast is tilted forward, using non-standard forks or loading large goods, the load capacity will be reduced. The load capacity of standard mast at different load center can be known from this load chart.



能量再生技术

RENEWABLE ENERGY TECHNOLOGIES

应用负荷传感优先转向和交流控制能量再生技术,叉车更节能,蓄电池单作业循环时间最大延长15%。

With the use of the excellent load-sensing steering system and AC controlling renewable energy technologies, the forklift is more energy-saving and the working hour of the battery is extended by 15%.



制造商和技术参数 Manufacturer's Data and Design Characteristics

特性 Characteristics		Manufacturer		Model	
1.01	制造厂商	HELI		CQD20	
1.02	型号			GB2SHD	
1.03	配置号	Configuration number		2000	
1.04	额定载荷	Q	kg	600	
1.05	载荷中心距	C	mm	600	
1.06	动力方式	Power mode		蓄电池/Battery	
1.07	驾驶方式	Driving mode		座驾/Seated	
1.08	前悬距	X	mm	431	
1.09	轴距	y	mm	1670	
重量 Weight					
2.01	总重 (含电池/不含电池)	Total weight (with/without battery)		4455/3220	
2.02	空载桥负荷, 前/后 (货叉前移)	Axle load, unladen, front/rear (fork advanced)		1915/2540	
2.03	空载桥负荷, 前/后 (货叉后移)	Axle load, unladen, front/rear (fork retracted)		2670/1785	
2.04	满载桥负荷, 前/后 (货叉前移)	Axle load, laden, front/rear (fork advanced)		1350/5105	
2.05	满载桥负荷, 前/后 (货叉后移)	Axle load, laden, front/rear (fork retracted)		2845/3610	
轮胎 Tyres				聚氨酯/Polyurethane	
3.01	轮胎类型	Tyre type		φ343x135	
3.02	轮胎尺寸, 前	Tyre size, front		φ330x135	
3.03	轮胎尺寸, 后	Tyre size, rear		1x/2	
3.04	车轮数量, 前/后 (x=驱动轮)	Wheels, number front/rear (x=driven wheels)		11/8	
3.05	后轮距	Tread, rear		b ₁₁ mm	
尺寸 Dimensions					
4.01	货叉倾角 (前倾/后倾)	Fork tilt angle (forward/backward)		α/β	°
4.02	门架全高 (货叉落地, 门架垂直)	Height (mast lowered)		h ₁	mm
4.03	自由起升高度	Free lifting height		h ₂	mm
4.04	起升高度 (标准)	Lifting height (standard)		h ₃	mm
4.05	作业时最大高度 (带指货架)	Max. height, extended (with backrest)		h ₄	mm
4.06	护顶架高度	Height of overhead guard		h ₅	mm
4.07	座椅SIP点高度 (到地面)	Seat height relating to SIP (to ground)		h ₇	mm
4.08	全长 (带货叉)	Overall length (with fork)		l ₁	mm
4.09	全长 (不带货叉)	Overall length (without fork)		l ₂	mm
4.10	全宽	Overall width		b ₁	mm
4.11	货叉尺寸: 厚x宽x长	Fork size: thickness x width x length		s/e/l	mm
4.12	货叉架, ISO2328标准	Fork carriage, according to ISO2328		2A	
4.13	货叉外侧间距, 最大/最小	Distance between fork-arms, Max./Min.		b ₅	mm
4.14	货叉侧移量	Fork sideshifting		±75	
4.15	支腿内宽	Distance between support arms		b ₄	mm
4.16	前移距离	Reach distance		l ₄	mm
4.17	离地间隙 (满载, 门架处)	Ground clearance (laden, between mast)		m ₁	mm
4.18	直角堆垛通道宽度, 1000x1200横置托盘	Right angle stacking aisle width for pallet 1000 x 1200mm crossways		A _{st}	mm
4.19	直角堆垛通道宽度, 800x1200纵置托盘	Right angle stacking aisle width for pallet 800 x 1200mm lengthways		A _{st}	mm
4.20	外侧转弯半径	Min. outside turning radius		W ₀	mm
性能 Performance Data					
5.01	行驶速度 (满载/空载)	Travel speed (laden/unladen)		km/h	12/14
5.02	起升速度 (满载/空载)	Lift speed (laden/unladen)		m/s	0.35/0.55
5.03	下降速度 (满载/空载)	Lowering speed (laden/unladen)		m/s	0.5/0.5
5.04	前移速度 (满载/空载)	Reach speed (laden/unladen)		m/s	0.1/0.1
5.05	最大爬坡能力 (满载/空载)	Max. gradeability (laden/unladen)		%	10/15
电池 Battery					
6.01	蓄电池电压/容量 (K5)	Battery voltage/Capacity		V/Ah	48/775
6.02	蓄电池重量 (最小/最大)	Battery weight (Min./Max.)		kg	1235
6.03	蓄电池箱体尺寸	Battery box dimension		mm	1220×427×784
电机和控制器 Motor and controller					
7.01	驱动电机功率	Driving motor powering		kw	8
7.02	起升电机功率	Lifting motor powering		kw	12.5
7.03	转向电机功率	Steering motor powering		kw	0.4
7.04	驱动电机控制方式	Driving motor controlling mode		MOSFET/AC	
7.05	起升电机控制方式	Lifting motor controlling mode		MOSFET/AC	
7.06	转向电机控制方式	Steering motor controlling mode		MOSFET/AC	
其他 Addition data					
8.01	变速箱	Transmission box		合力专用变速箱/HELI special transmission box	
8.02	行车制动/停车制动	Service brake/Parking brake		电磁制动/Electromagnetic	

注: 蓄电池具体品牌及其容量大小, 请咨询销售或技术人员。

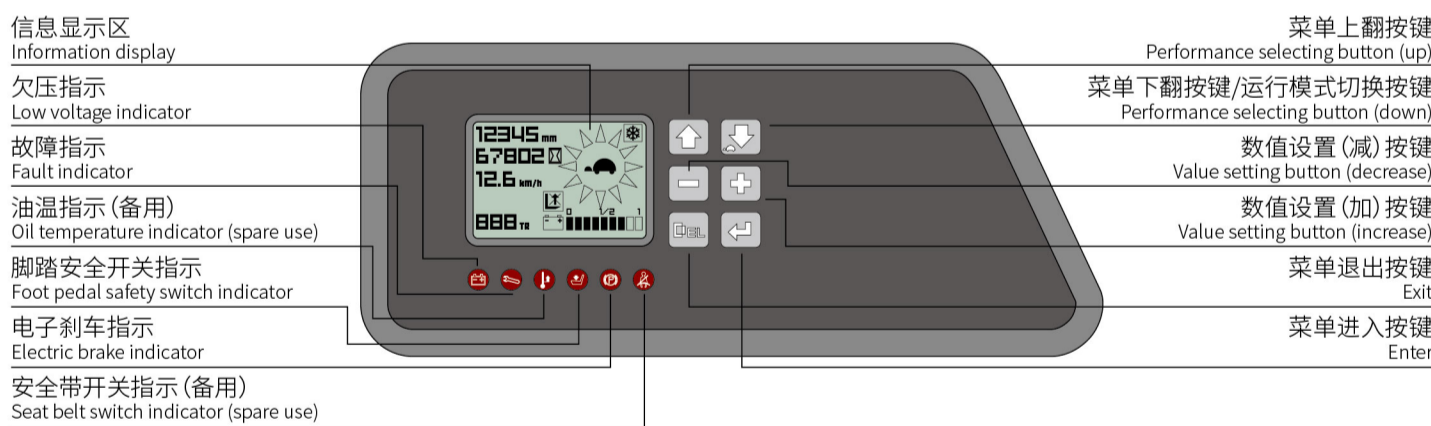
NOTE: *Detailed information about battery, please contact our salesmen or engineer.

HELI合力

可靠的专用仪表 Reliable special designed instrument

可靠的专用仪表将整车运行状态,故障检测等重要信息完整地显示出来,使操作者更直观、方便地了解车辆状态。

The reliable special instrument gives a complete display of the vital information, like operation status, fault detection, etc. It ensures the operator predominate the vehicle status more intuitive and convenient.



标准配置 Standard configuration

- AC行走电机 AC travelling motor
- AC起升电机 AC lifting motor
- AC转向电机 AC steering motor
- ZAPI行走电机控制器 ZAPI travelling motor controller
- ZAPI起升电机控制器 ZAPI lifting motor controller
- ZAPI转向电机控制器 ZAPI steering motor controller
- 电磁制动 Electromagnetic brake
- 起升高度认址 Lifting height pre-selector
- 监控系统 Monitoring system
- DC/DC转换器 DC/DC converter
- 低噪声齿轮泵 Low noisy gear pump
- 四片阀 Control valve (four throw)
- 4600mm三节全自由门架 4600mm three stage full free lift mast
- 整体式侧移器 Integral sideshifter
- 标准货叉 Standard fork
- 挡货架 Backrest
- 聚氨酯轮胎 Polyurethane tyre
- LED液晶仪表 LED meter
- 前工作灯 Front working light
- 广角后视镜 Rearview mirror with wide view angle
- 安全带 Safety belt
- 蓝光灯 Blue warning light

选用装置 Optional

- 其他长度货叉 fork with other length
- 货叉套 Fork extension
- 倒车蜂鸣器 Reversing buzzer
- 其他蓄电池 Other battery
- 德国HOPPECKER蓄电池组 Germany hoppecker battery
- 意大利FAAM蓄电池组 Italy FAAM battery
- 蓄电池充电器 Battery charger
- 颜色用户需求 Customer made color
- 蓄电池侧拉 Battery side pulling
- 合力智能车队管理系统 HELI smart fleet management system

合力产品范围: 1-46吨内燃叉车;0.6-18吨电动叉车;前移式叉车、托盘车、堆垛车等仓储类产品;AGV智能搬运车辆及系统解决方案;正面吊、堆高机、牵引车、防爆叉车、越野叉车、装载机等多种产品。



安徽合力股份有限公司
ANHUI HELI CO., LTD.
地址 / 中国 合肥方兴大道668号
Add / No.668, FangXing Road, Hefei, China
邮编 (Post Code) / 230000

客服热线 (Customer Service Hotline) / 4001-600761
服务电话 (Service Tel) / +86-551-63689000,63648005

* 本公司保留更改产品设计和规格的权利,恕不另行通知。
* Our products are subject to improvements and changes without notice.

HELI合力



2.0t
G2系列座式前移式交流
蓄电池叉车(重载型)

G2 SERIES AC ELECTRIC
REACH TRUCK-SIT-DOWN
TYPE(HEAVY DUTY TYPE)

G2 系列 / SERIES 2.0 t

三相交流电机技术

Three phase AC type motor technology

- 行驶、提升和转向均采用三相交流电机控制
- 强大的加速性
- 变换行驶方向灵敏迅速无迟滞
- 无碳刷的免维护电机寿命更长, 维护费用更低, 减速时进行能量回收, 操作时间更长
- 最大空载行驶速度提高20%
- 最大满载行驶速度提高27%
- Three phase AC type motor control on travelling, lifting and steering
- Good acceleration
- Fast and sensitive respond on travel direction shifting Free from maintenance motor without carbon brush having long service life and low maintenance cost
- Energy regenerating during deceleration extending operation hours
- Max. travelling speed without load 20% increased
- Max. travelling speed with load 27% increased

全新的液压设计

Newly designed hydraulic system

- 全新的液压设计, 使液压系统的工作效率更高
- 大功率的起升电机
- MOSFET起升调速电控
- 新型叉分齿轮技术低噪音齿轮泵
- 最大空载起升速度提高15%
- 最大满载起升速度提高25%
- Newly designed hydraulic system with high working efficiency
- High power lifting motor
- MOSFET lifting speed governing electric controller
- New type low noisy gear pump
- Max. lifting speed without load 15% increased
- Max. lifting speed with load 25% increased

更加优化的智能型设计

Optimized intelligent design

- ZAPI行走电机控制器
- ZAPI起升控制器
- ZAPI转向电机控制器
- CAN总线技术
- 主回路控制回路同时紧急断电
- ZAPI travelling motor controller
- ZAPI lifting motor controller
- ZAPI steering motor controller
- CAN bus technology
- Emergency power off of both main circuit and control circuit
- 坡度停车自制动
- 操作顺序保护
- 行驶速度控制
- 电控自保护
- Parking brake on slope
- Operation sequence protection
- Travelling speed control
- Electric controller self protection

先进的EPS电子动力转向

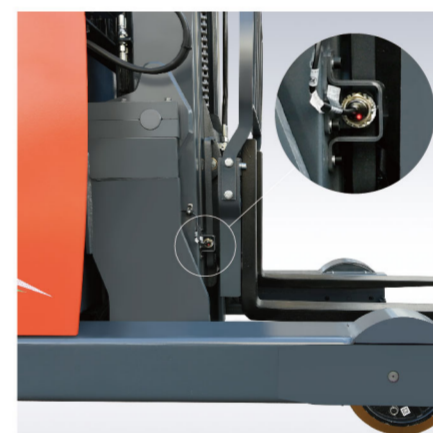
Advanced EPS electric powered steering

- EPS电子动力转向, 为整车提供了轻便灵活, 高效静音的操作
- 转向电机控制器
- 自动对中功能
- 180度/360度两种转向模式, 可实现实时切换
- 转向自动限制时速和加速度
- EPS electric powered steering offering easy, flexible, high efficient and mute operation
- Steering motor controller
- Automatic centering function
- Real-time shifting between 180°steering mode and 360° steering mode
- Automatic limit on speed and accelerated speed when steering

操作轻便的拇指开关

Easy operated thumb switch

- 拇指开关可以控制所有液压功能
- 操作部件功能明确并且一目了然
- 比例电磁阀控制下降动作, 平稳舒适
- To control hydraulic functions
- Clear operating units
- Proportional solenoid offering a stable and comfort lowering action



操作显示器 Displayer

- 高品质的控制仪表可显示绝大多数重要的运行数据
- 行驶方向和驱动轮角度显示
- 180°/360°转向模式显示
- 电瓶电量情况与故障代码显示
- 选择行驶模式
- 起升锁止指示
- 小时计
- High quality meter displaying important operating data
- Display of traveling direction and drive wheel angle
- Display of 180°/360° steering mode
- Display of battery quantity and fault code
- Travelling mode selection
- Lifting lock indication
- Hour meter

宽视野门架 Wide view mast

- 在负载方面拥有绝佳的视野
- 整体式侧移器
- 门架垂直, 货叉倾斜
- 起升高位时, 剩余载荷大
- 起升高度系列范围4600~12500mm
- 起升和下降过程缓冲
- 起升和下降极限缓冲
- 前移油缸实现缓冲
- Good view when loaded
- Integral sideshifter
- Mast vertical, fork tilt
- High residual load capacity at high lift height
- Lift height range:4600-12500mm
- Buffering during lifting and lowering
- Buffering on lifting and lowering limit
- Buffering when cylinder moving forward

护顶架 Overhead guard

- 顶部栅栏板方式使驾驶员有更宽阔的视野
- 前环梁倾斜视角设计更符合人眼睛视觉角度
- Fence on top of the overhead guard offering driver wide view
- Beveled view angle design with front ring beam meeting humanized requirements

舒适的驾驶室 Comfort cab

- 舒适方便的座舱为驾驶员提供良好的工作环境并使得操作更轻松
- 重要操作部分均触手可及
- 座椅可调节(座椅位置/靠背角度)
- Comfort cab offering driver good working environment and easy operation
- Easy reach to important operation
- Adjustable seat (seat position /backrest angle)

合力智能车队管理系统(选配)

- 车辆定位
- 远程诊断
- 远程监控
- 维保提示
- 电池管理
- 统计报表
- 车辆管理
- 身份识别(选配)
- 称重管理(选配)
- 碰撞管理(选配)
- Vehicle positioning
- Remote diagnosis
- Remote monitoring
- Maintenance reminder
- Battery management
- Statistical form
- Vehicle management
- Ldentification recognition (optional)
- Weight management (optional)
- Collision management (optional)

HELI smart fleet management system (optional)

